

PAVEMENT MANAGEMENT IN THE ERA OF AI: OPPORTUNITIES AND CHALLENGES



**AI might miss a crack,
but remember—potholes
are still a choice**

Pavement Management in a Digital World

By James Golden III

Founder & CEO

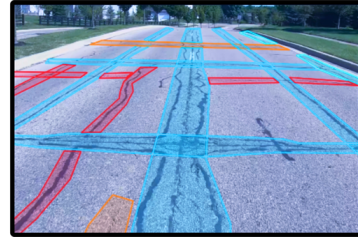
Pavement Management Group

Introduction

The advent of Artificial Intelligence (AI) is transforming industries across the globe, and pavement management is no exception. As municipalities and public works departments seek innovative solutions to optimize roadway maintenance, AI promises to revolutionize the way we assess and manage pavement conditions. However, while AI offers substantial benefits, it is not without its challenges. This whitepaper explores the current role of AI in pavement management, the opportunities it presents, the limitations we have encountered, and insights on how to effectively integrate AI with traditional pavement management practices.

The Role of AI in Pavement Management

AI's application in pavement management primarily involves automated condition assessments using machine learning algorithms. By analyzing images and data captured from road networks, AI models can identify various pavement distresses, such as cracks, potholes, and rutting, and assign a Pavement Condition Index (PCI) score. This data-driven approach aims to enhance the accuracy and efficiency of pavement evaluations, reduce human error, and streamline the decision-making process.



Opportunities

1. Increased Efficiency

AI can process vast amounts of data in a fraction of the time it would take a human inspector. This allows for more frequent and comprehensive assessments, enabling pavement managers to monitor the condition of road networks continuously.

2. Objective Analysis

AI eliminates much of the subjectivity inherent in traditional pavement assessments. By relying on data rather than human judgment, AI helps ensure that evaluations are consistent and unbiased, leading to more reliable decision-making.

3. Cost Savings

By automating the condition assessment process, AI can significantly reduce labor costs and allow for more targeted maintenance interventions, ultimately extending the life of pavements and reducing the need for costly repairs.

4. Predictive Maintenance

AI's ability to analyze trends and patterns in pavement data enables it to predict future distresses and deterioration, allowing for proactive maintenance planning. This can lead to better budget allocation and more effective use of resources.

Challenges

1. Accuracy of Distress Identification

Despite its potential, AI is not yet foolproof. Certain conditions, such as shadows cast by trees or water on the pavement, can confuse AI models, leading to inaccurate distress identification. Our experience has shown that AI sometimes struggles to distinguish between actual pavement issues and anomalies caused by environmental factors.

2. Human Error in Training Data

The effectiveness of AI models depends heavily on the quality of the training data. If the data is incorrectly labeled—whether due to human error or oversight—the AI model will learn from these mistakes, leading to flawed assessments. This emphasizes the importance of meticulous data preparation and ongoing quality control.

3. Time-Consuming Training and Improvement

Developing and refining AI models is a time-consuming process. While initial improvements can be significant, the pace of advancement slows as the model matures. Like any other activity, reaching a high level of accuracy with AI requires patience and persistent effort.

4. The Need for Expert Validation

AI should not be used in isolation. Our experts have found that AI assessments still require validation and oversight by human inspectors. This hybrid approach—where AI handles the bulk of data processing but humans provide final validation—ensures that the limitations of AI are mitigated, and the reliability of pavement assessments is maintained.

"AI is a powerful tool but it's not a replacement for human expertise. It's like having a high-tech compass—it can point you in the right direction, but you still need experience and judgment to navigate the journey."

- James Golden III

Shadow or Crack? The Challenge of AI Perception



Lessons Learned and Best Practices

1. Continuous Improvement

Our experience has shown that AI models improve over time, but the path to perfection is incremental. Regularly updating the training data, refining algorithms, and incorporating new types of pavement distress are essential steps in this ongoing process.

2. Integration with Traditional Practices

AI should complement, not replace, traditional pavement management practices. By integrating AI into existing workflows, we can enhance the accuracy and efficiency of pavement assessments while retaining the critical insights and judgment that only experienced human inspectors can provide.

3. Training and Validation

Investing time in proper training and validation processes is crucial. Ensuring that AI models are trained on high-quality, accurately labeled data, and regularly validated by human experts, can significantly improve their reliability and usefulness.

4. Transparency and Communication

It's essential to maintain transparency with stakeholders about the capabilities and limitations of AI. By setting realistic expectations and clearly communicating the role of AI in pavement management, we can build trust and encourage the adoption of these innovative technologies.

Conclusion

AI represents a promising tool in the evolution of pavement management, offering substantial benefits in terms of efficiency, objectivity, and cost savings. However, it is not a silver bullet. The challenges we have encountered highlight the need for a balanced approach that combines the strengths of AI with the expertise of human inspectors. As we continue to refine and improve our AI models, we are confident that this technology will play an increasingly vital role in maintaining and optimizing our roadway networks.

By embracing both the opportunities and challenges of AI, we can pave the way to a more efficient, effective, and resilient pavement management system—one that leverages the best of both worlds.

For more information or inquiries about this whitepaper, please contact:

E-mail: James@pavementmanagementgroup.com

Website: www.pavementmanagementgroup.com

